

Welcome to Chestnut Class

At the beginning of the school day, Chestnut Class children will stand outside of the silver gates and then be let into the year 1 outside area. They will be welcomed into the class by Mrs Keates.

On your first day put your named water bottle in the boxes in the classroom and place your fruit in the bowl. Then go and find your labelled peg on the trolley in the Rainbow Room. Here you can hang up your coat and your P.E bag.

Parents/carers – At the end of the school day, at 3pm, your child will be dismissed from the classroom door. Please stand in a visible space so the teacher can clearly see you as they will not be released if an adult is not there to collect them. If you have any concerns please contact the team via Seesaw or phone the office and leave a message.



Mrs Keates is your teacher.



Chestnut Class is at the front of the school. Please do not enter through the wooden or silver gates before school starts at 8:30am.



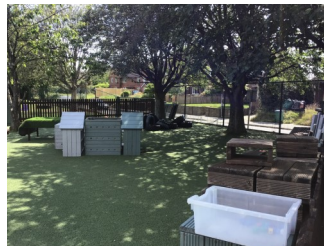
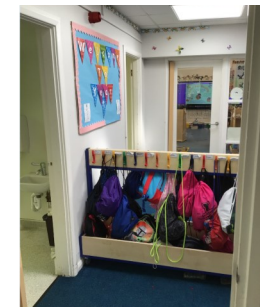
Maple



Chestnut



The toilets are in between both classes and are attached to the Rainbow Room.



We share an outdoor play area with Maple Class. It has a sandpit, a play house and a sheltered area. During Discovery Time you can go outside and show what you have learned that day.

At the end of lunchtime play, we line up by the wooden gates.

